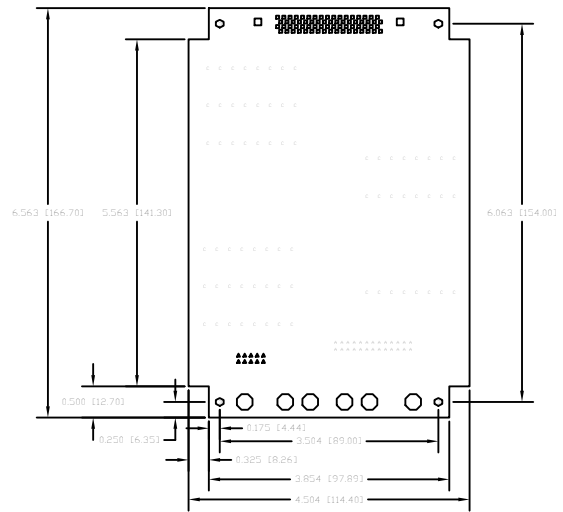


REV	DATE	DESCRIPTION	DESIGNED BY	DATE	APPROVED BY
1		INITIAL RELEASE		5-22-11	

PCB DIMENSIONS AND HOLE LOCATIONS

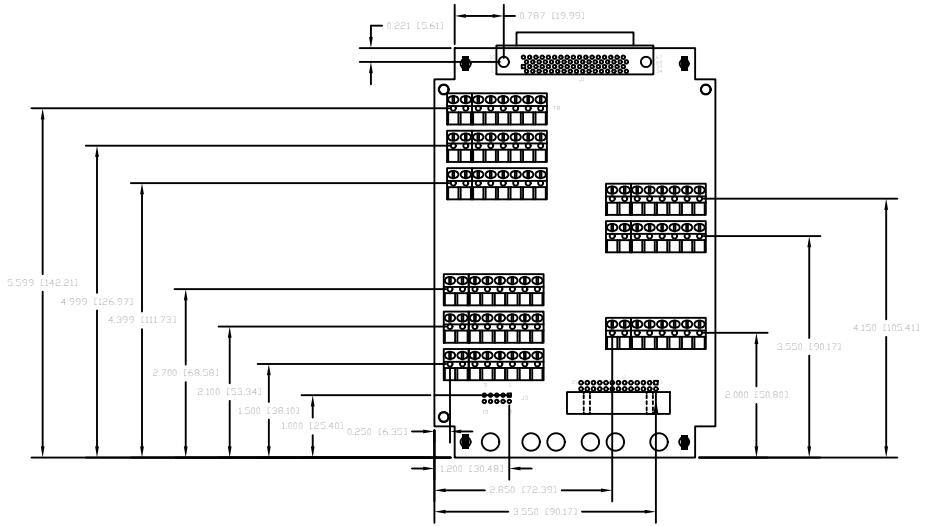


NOTES:
 1. MATERIAL: .062 +/- .005 THICK, HR-370

DRILL CHART TOP TO BOTTOM			
ALL UNITS ARE IN MILS			
FIGURE	SIZE	PLATED	QTY
•	20.0	PLATED	89
▲	32.0	PLATED	36
■	35.0	PLATED	174
·	40.0	PLATED	26
·	51.0	PLATED	72
□	109.0	PLATED	2
○	125.0	PLATED	1
○	125.0	NON-PLATED	3
○	250.0	NON-PLATED	6

+0.002"/-0.004"

COMPONENT LOCATIONS



MAXIMUM COMPONENT HEIGHT
 COMPONENT SIDE = 470 (12)
 SOLDER SIDE = .118 (3)

COMPONENT CHART			
REF DES	MANUFACTURER	MANUFACTURER P/N	QTY P/W
U1	TE CONNECTIVITY	1791730-7	14843
U2	3M ELECTRONICS	12526-5002-RR	6555
U3	AUTOSPICE	8-252P 9424	67526
TR4	TECO	274-T-25/G	16924

PCB CHART	
P/N	REV
16487	A

DR NOT SCALE DRAWING REMOVE ALL BURRS AND SHARP EDGES	DATE	CHK
ALL DIMENSIONS UNLESS SPECIFIED ARE IN INCHES	DATE	CHK
TOLERANCES	DATE	CHK
AX	ANG	PROF
DATE	DATE	DATE
SEE NOTE 1		

DATA TRANSLATION
 3000 W. BROADWAY, SUITE 100
 LOS ANGELES, CA 90018-3443
 TEL: (213) 749-0000 FAX: (213) 749-0001

SALES DRAWING
 STP300

DATE	REV	QTY